

MAX-1™

ALUMINUM FOOTBALL GOAL POSTS

MAX-1™ all aluminum
goal posts available in
three powder coat options

Adjustable in two directions ensures
crossbar and uprights are level and
plumb.

Recommended for:

Collegiate and **High School Programs**

Features:

- 6 $\frac{5}{8}$ " crossbar and gooseneck available with 6' or 8' offset
- 4" uprights available in 20' or 30' heights
- 30' uprights are two-piece (Single-piece available upon request)
- Permanent/semi-permanent or adjustable leveling plate installation
- Includes wind streamers
- Ground sleeves for semi-permanent installation sold separately

8' offset perfect for multi-purpose fields can be used with soccer goals SGP-600AX, SGP-400, SGP-760, and CC24S.

SOLD IN PAIRS

POWDER COAT COLORS:



WHITE (WH)



YELLOW (YW)



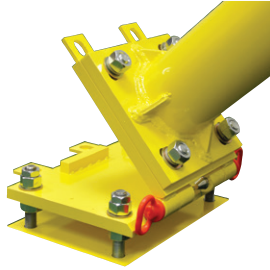
PRO YELLOW (PY)

FOOTBALL HINGE KIT

Allows any surface-mounted MAX-1™ football goal to be lowered and dismantled from ground level by a maintenance crew. Ideal for multi-purpose facilities!

- Opposing pull pins offer easy separation of hinge plates
- Required access frame and cover (FBGPAF-2) sold separately

FBHG-1 (EACH)



STANDARD GROUND SLEEVES

Allows for semi-permanent installation.

6⁵/₈" Post - Max-1
FBSLV8 (PAIR)



ACCESS FRAMES AND COVERS

For use with semi-permanent goals requiring removal from grass or turf fields.

- Aluminum, pressure-treated plywood, and artificial turf design
- 2 frames and 2 turf covered half plug plates included
- Optional full covers available



Goals w/ Leveling Plate

18" x 18" x 6¹/₂"

FBGPAF-1 (PAIR)

Goals w/ Hinge Kit on Max-1™

26" x 26" x 10"

FBGPAF-2 (PAIR)



Optional full covers available



**SOCCER/
FOOTBALL
ANCHOR
KIT**
(for SGP-600AX)

Fastens soccer goal rear crossbar to football goal gooseneck.

6⁵/₈" Post SFGA-6 (KIT)

5⁹/₁₆" Post SFGA-5 (KIT)

4¹/₂" Post SFGA-4 (KIT)



WIND STREAMERS

(4) 42"L x 4"W streamers with grommets and mounting hardware.

Red

WS-42RD (SET OF 4)

Orange

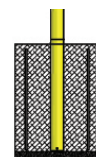
WS-42OR (SET OF 4)

MAX-1™ EXPANDABLE CROSSBARS

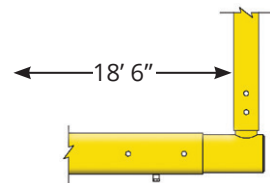
Telescoping design adjusts crossbar width for official use at 23' 4" (high school) and 18' 6" (collegiate). Anti-rotation feature holds uprights in place allowing adjustment by one person.

Expandable: 18' 6" - 23' 4"W - Semi-Permanent / Permanent

Offset	Uprights	Item #	UoM
6'	20'	FBGP-520AX	(PAIR)
8'	20'	FBGP-820AX	(PAIR)

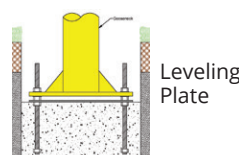


Semi-Permanent / Permanent



Expandable: 18' 6" - 23' 4"W - Leveling Plate

Offset	Uprights	Item #	UoM
6'	20'	FBGP-420AX	(PAIR)
8'	20'	FBGP-920AX	(PAIR)



Leveling Plate

