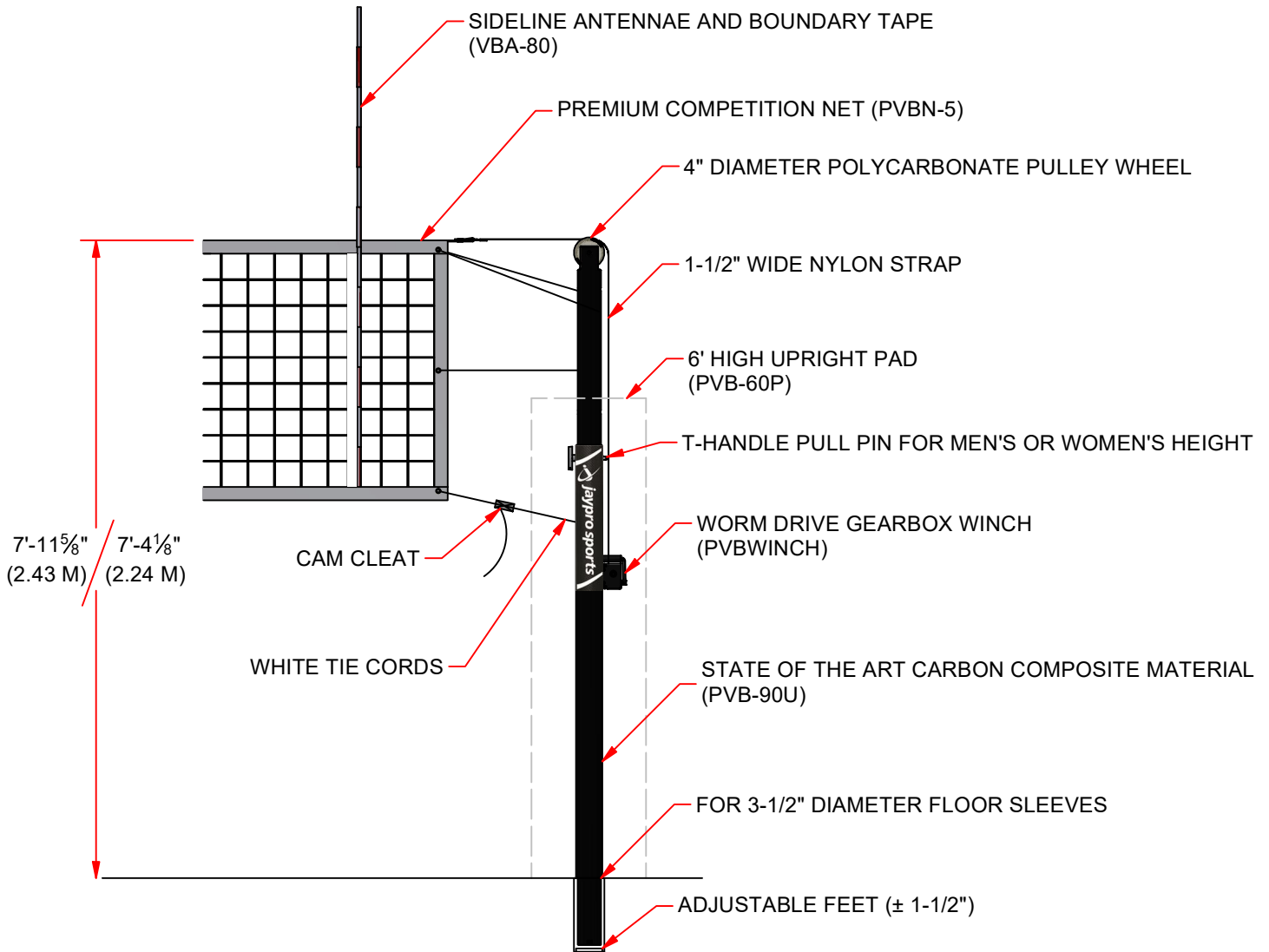


# PVB-9000 Carbon Volleyball 3-1/2" System



## FEATURES:

- POLES ARE FABRICATED FROM STATE OF THE ART CARBON COMPOSITE MATERIAL.
- EACH UPRIGHT WEIGHS LESS THEN 16-3/4 LBS. (UNDER 20 LBS. WITH WINCH).
- DESIGNED FOR MEN'S, WOMAN'S & YOUTH VOLLEYBALL.
- 3" OF ADJUSTABLE FEET FOR FINE TUNING ADJUSTMENT.
- FOR USE WITH 3-1/2" DIAMETER FLOOR SLEEVE.
- UPRIGHT PAD COMES IN OPTIONAL COLORS.
- COMPLETE SYSTEM INCLUDES:
  - UPRIGHTS (PVB-90U)
  - WORM DRIVE WINCH (PVBWINCH)
  - PREMIUM COMPETITION NET (PVBN-5)
  - UPRIGHT PADDING (PVB-60P)
  - ANTENNAE (VBA-80)



4" DIAMETER POLYCARBONATE PULLEY WHEEL



## PVB-9000

Carbon Volleyball 3-1/2" System

© COPYRIGHT JAYPRO SPORTS, LLC. ALL RIGHTS RESERVED THIS PRINT IS THE PROPERTY OF JAYPRO SPORTS, LLC. AND MAY NOT BE REPRODUCED WITHOUT WRITTEN PERMISSION

[www.jayprosports.com](http://www.jayprosports.com)  
 (800) 243-0533  
 976 Hartford Turnpike  
 Waterford, CT 06385 USA

Rev: A

SHEET 1 OF 1